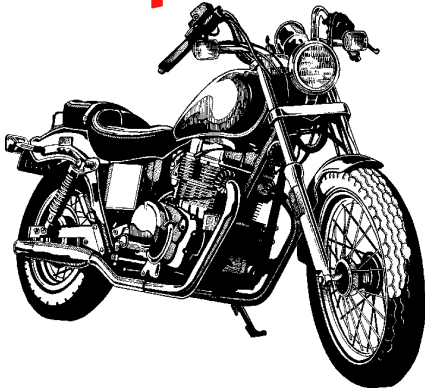


# Chapter 9



## Motorcycles

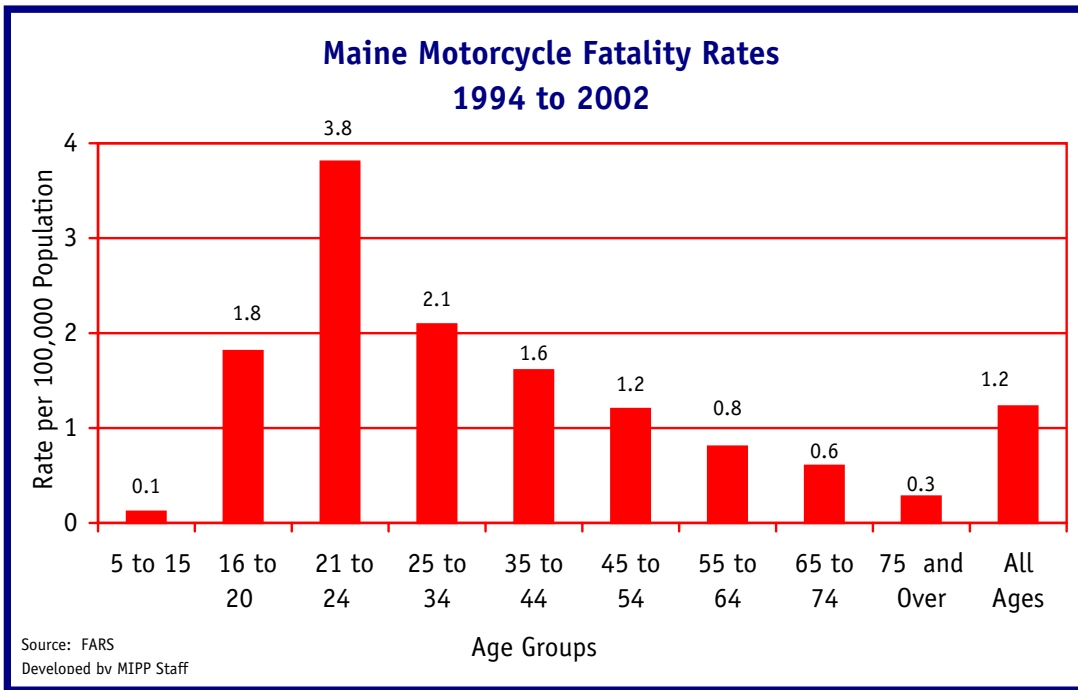
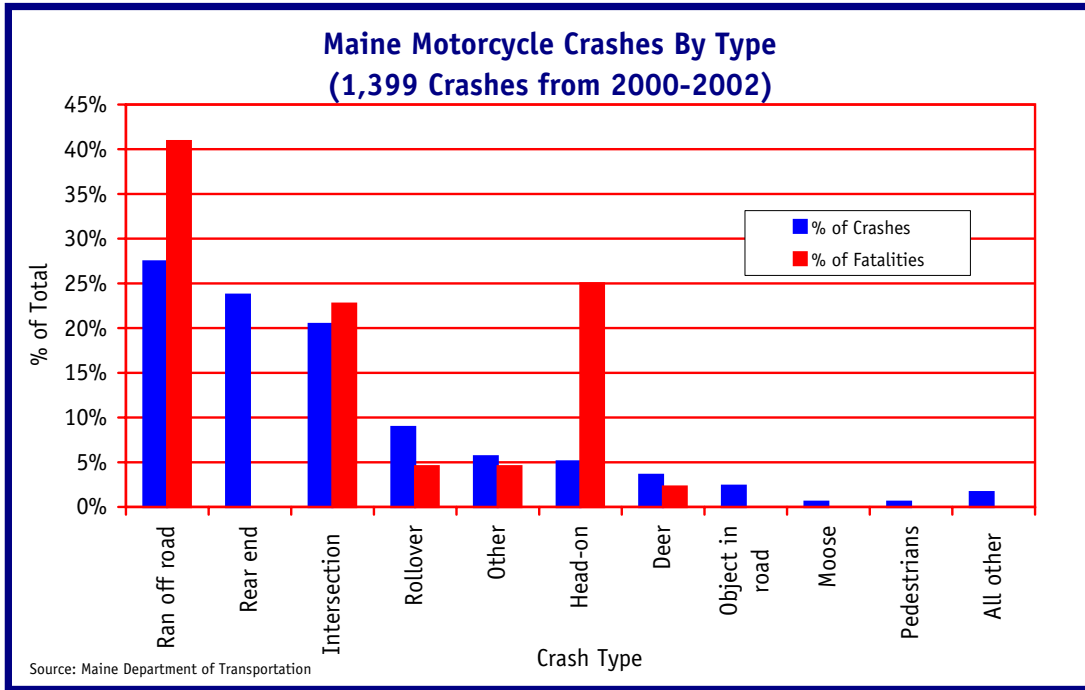
Motorcycle riding in Maine is a seasonal activity. The number of fatalities over the years has remained constant. The lack of helmet use in fatal crashes is high. Males account for the majority of fatal crashes. Alcohol use in fatal motorcycle crashes nationally is a concern. Over a 9-year span, 35% of Maine motorcycle drivers involved in fatal crashes used alcohol. Though below the national average, this rate is nearly double that of other Maine drivers involved in fatal crashes.

### Statewide

- From 1994 to 2002, males accounted for 89% of all motorcycle fatalities. The ages from 21 to 24 have the highest rate of deaths per population (3.81/100,000). The second highest group is ages 25 to 34 with a rate of 2.09. The number of Maine motorcycle fatalities during the past 3 years were 13 in 2002, 14 in 2001, and 18 in 2000. The 18 fatalities in 2000 was the highest number in 9 years (7 fatalities in 1997 was the lowest). There were 131 people killed on motorcycles over the 9-year span. Of these, 94 people were not wearing helmets. Maine's helmet law was repealed in 1977. A 2002 CSI Research Center survey conducted for the state of Maine found that 35.6% of motorcycle riders wore helmets. Helmets are required for drivers in the following circumstances: operating on a permit, for one year following successful completion of a driving test, and any person under 15 riding as a motorcycle passenger.
- The most predominate types of crashes are: run off road, rear-end, head on, and intersection related.
- The number of fatalities has remained stable over the last few years, however the number of crashes and injuries has gone up.
- Maine motorcyclists have a higher percentage of Read End Crashes (24%) when compared to national rates (12%).

### Comparison of National Trends

- A 2001 NHTSA study reveals that there was a 10% increase in motorcycle fatalities in one year, from 2,897 to 3,181. National statistics indicate a 50% helmet use rate. NHTSA also states that helmet use reduces brain injury by 67% and fatalities by 29%.
- NHTSA 's 2001 study indicates that motorcycle drivers had the highest amounts of alcohol concentration rates among all vehicle operators. Forty-one percent of all motorcycle fatalities involved operators who were intoxicated.



Males accounted for 89% of all motorcycle deaths during this period.

